



# FLUORESCENT LIGHTING

FL-31 ES  
04/14

## QUESTIONS OR CONCERNS CONTACT CANARM AT:

1-800-265-1833 (English) / 1-800-567-2513 (French) / Monday through Friday 8:00 AM to 5:00 PM E.S.T.

INSTRUCTIONS PERTAINING TO RISK OF FIRE OR INJURY TO PERSONS  
READ ALL INSTRUCTIONS



**IMPORTANT SAFETY INSTRUCTIONS**  
**SAVE THESE INSTRUCTIONS**

## TOOLS AND MATERIALS REQUIRED:



Blade  
Screwdriver



Pliers



Hammer



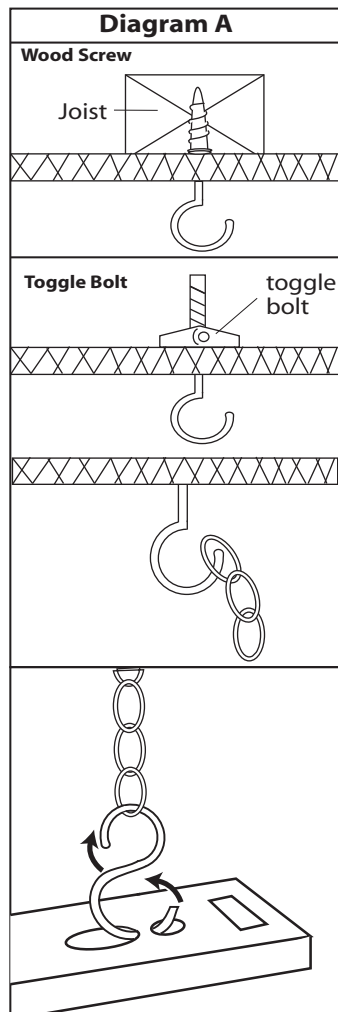
Wiring supplies  
as required by  
electrical code

## SAFETY PRECAUTIONS:

1. TURN OFF ELECTRICAL POWER BEFORE STARTING INSTALLATION OF LIGHT FIXTURE.
2. THIS PRODUCT MUST BE INSTALLED IN ACCORDANCE WITH THE APPLICABLE INSTALLATION CODE BY A PERSON FAMILIAR WITH THE CONSTRUCTION AND OPERATION OF THE PRODUCT AND THE HAZARDS INVOLVED.
3. THIS FIXTURE IS DESIGNED FOR 120 VOLT CIRCUIT. IF UNSURE ABOUT WIRING, CONSULT AN ELECTRICIAN. **WARNING: DO NOT CONNECT FIXTURE TO DIMMER CIRCUIT.**
4. USE ONLY ENERGY STAR APPROVED BALLAST (WITH LAMP SOCKETS) MANUFACTURED BY CSA FILE NUMBER 226237 AND MARKED BY CANARM LIMITED. THIS BALLAST IS REPLACEABLE BY A QUALIFIED ELECTRICIAN WITHOUT CUTTING OF THE WIRES.

**NOTE: Product May Not Look Exactly As Shown In Figures.**

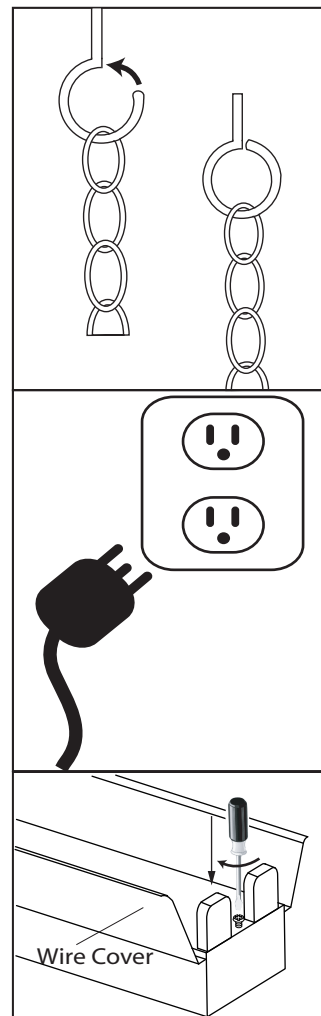
## INSTALLATION:



1. Secure the two open screw eyehooks (provided) to the ceiling 42 1/2" apart. Secure directly to a joist or using toggle bolts (not included). See diagram A.

2. Attach the mounting chains (provided) to the open screw eye hooks.

3. Attach the mounting chains into the dual slots that are located on top of the fixture housing. Crimp the screw eye hooks closed using pliers.



4. Level the fixture by adjusting the length of the chain at the open screw eye hooks. Crimp the screw eye hooks closed using pliers.

5. Install proper bulb type and wattage. Insert the pins on both ends of the fluorescent tube into the lamp holders on both ends. Rotate the tube until a slight "click" is felt. Repeat for additional bulbs.

6. Plug cord into a grounded 120V, 60 Hz outlet.

7. When the ballast is replaced, unplug the fixture. Remove the wire cover by loosening the screw. Loosen the screw and nut to remove the ballast and sockets from fixture.